

Haldane

Contour



HALDANE

Nature Culture.

With its graceful geometries, restrained palette and oversized volumes, the Contour Daybed reconnects users with the natural world. Inspired by organic shapes, this escapist future-icon from Haldane is an expression of the brand's ethos of integrating culture and nature.





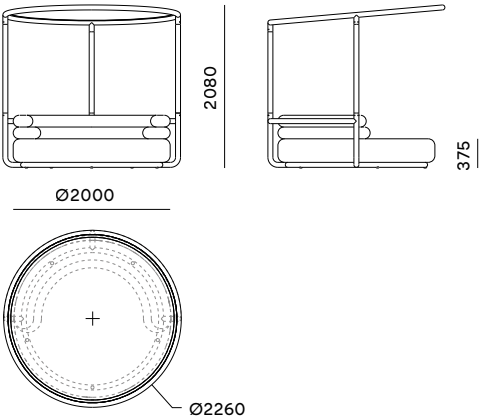




Materials

Canopy	Mesh Awning Fabric
Frame	SS Powder Coated
Upholstery	Outdoor Fabric
Weather Cover	Waterproof Polyester

Dimensions

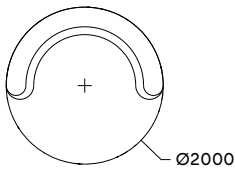
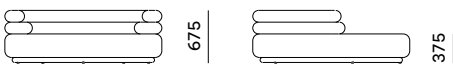




Materials

Frame	SS Powder Coated
Upholstery	Outdoor Fabric
Weather Cover	Waterproof Polyester

Dimensions

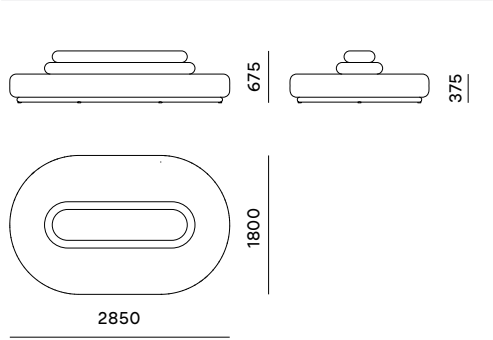




Materials

Frame	SS Powder Coated
Upholstery	Outdoor Fabric
Weather Cover	Waterproof Polyester

Dimensions



Powder Coat Colours

Aluminium, Stainless Steel (SS304) and Marine Grade Stainless Steel (SS316) components are offered powder coated in exterior grade UV-stable pure polyester with a luxurious ferro grain finish in the colour of your choice, from our extensive colour palette.



Traffic White



Silk Grey



Light Grey



Umber Grey



Jet Black



Cream



Lemon Cream



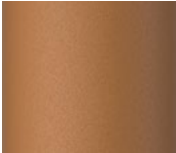
Brass Yellow



Lemon Yellow



Peanut butter



Ochre Brown



Chestnut Brown



Terra Brown



Beige Red



Coral Red



Purple Red



Milkshake Pink



Aster Flower



Pastel Violet



Pastel Turquoise



Himalaya Blue



French Blue



Gentian Blue



Ocean Blue



Night Blue



Pale Green



Rich Green



Emerald Green



Olive Green



Moss Green

Crevin Fiji (IMP)

Fiji (IMP) is a textured jacquard weave option for fully outdoor conditions as this beautiful and functional upholstery fabric collection can be spot cleaned allowing the easy removal of mildew. Crevin's Fiji (IMP) fabrics are finished with stain-repellence and with an internal layer of waterproof lamination.



Fiji IMP - 07 Snow



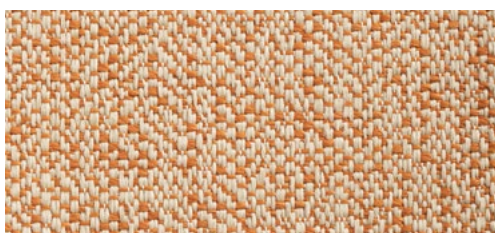
Fiji IMP - 75 Avalanche



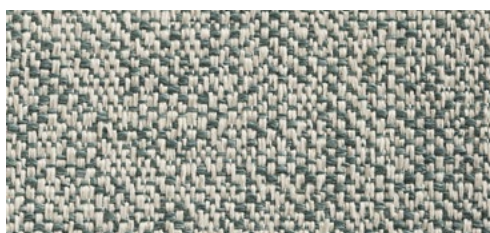
Fiji IMP - 83 Graphite



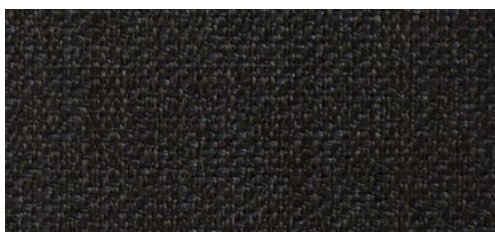
Fiji IMP - 32 Palm



Fiji IMP - 29 Citrus



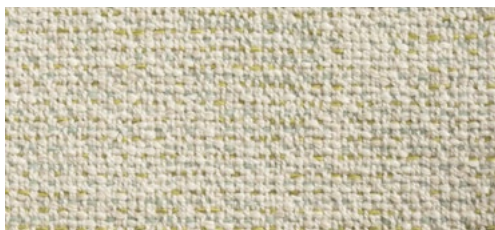
Fiji IMP - 43 Seaside



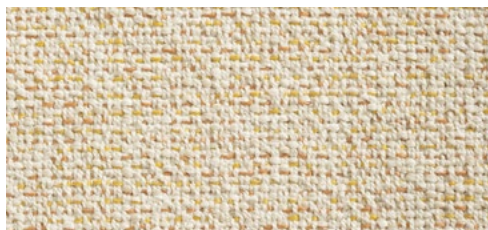
Fiji IMP - 47 Midnight

Crevin Salina (IMP)

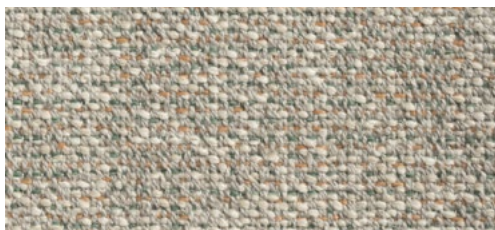
Salina (IMP) is inspired by the crystals of salty water on the surfaces of outdoor objects reminding us of seaside life. Salina (IMP) is soft and subtle while suited to fully outdoor conditions with it's internal layer of waterproof lamination.



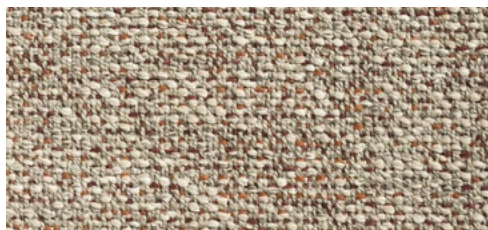
Salina IMP - 39 Caiprinha



Salina IMP - 29 Pink Lemonade



Salina IMP - 34 Blue Sunrise



Salina IMP - 27 Bloody Mary

Outdoor Steel Powder Coating Care

Care for your powder coated stainless steel & aluminium components by wiping when dirty with a damp cloth soaked in a solution of mild detergent (like Sunlight Liquid) and water. For coastal environments (within 200m of the ocean) it is necessary to make use of Marine Grade stainless steel SS316 and to wipe sea air condensation off of your furniture on a weekly basis. Avoid harsh chemical cleaning products and scratching with sharp objects as this can damage the powder coating.

Outdoor Upholstery Fabric Care

Care for your upholstery by regularly brushing off loose dirt with a soft brush. When dirty, spot clean using a soft bristle brush to scrub on a solution of water and mild soap. Allow the cleaning solution to soak into the fabric. Rinse thoroughly until all soap residue is removed and then air dry. Make use of Waterproof Polyesters when furniture is on unWeather Covered patios or take removable upholstery indoors.

Dekton Table Top Care

Due to its practically zero porosity, the ultra-compact Dekton® surface is highly resistant to staining in day-to-day use and from chemical products, making it ideal for use as a table top for both indoors and out.

For general cleaning, Cosentino recommends the use of Q-Action with a sponge or soft cloth. If this product is not available, the best option is to use a neutral soap (like Sunlight liquid) and water.

WARNING

Do not mechanically polish the surface. Avoid using metal scouring pads. Whilst the table top material is incredibly durable, they can break when hit with heavy objects.

Iroko Timber Care

For general cleaning, use a clean cloth to wipe down timber components with a solution of Rubio® Monocoat Exterior Soap and water. Allow the surface to dry.

For maintenance reapply Rubio® Monocoat Hybrid Wood protector every 6 to 12 months, depending on the level of exposure to the outdoor elements.

Clean as above with Rubio® Monocoat Exterior Soap. Rinse thoroughly until all the foam has disappeared.

Allow the surface to dry well (± 30 minutes at a temperature of 20 °C and proper ventilation). Treat with the Rubio® Monocoat Hybrid Wood Protector in the same colour as your original application.

Apply the oil with a clean cloth. Allow a few minutes for the product to react. Remove any excess oil.

WARNING

Cloths, saturated with oil, may spontaneously combust. Soak cloths in water after use before disposal.

Haldane Martin Design (Pty) Ltd (Seller) offers a limited warranty on products sold by the Seller to the purchaser (Purchaser), Weather Covering defects in material and workmanship for a period of 3 years from the date of invoice, subject to terms, conditions and limitations described below.

1. Products sold directly from the showroom floor, acquired on sale, in customers' own materials and prototypes are excluded from this limited warranty.
2. Only the customer who originally purchased a new product from the Seller or its' authorized dealers may make claims under the limited warranty. The limited warranty does not extend to any subsequent buyer or other transferee. The limited warranty does not Weather Cover claims for damage resulting from normal wear and tear or unusual conditions of use.
3. The Seller will repair or replace any product(s) determined by the Seller to be defective within the applicable warranty period. The seller has the right at its' sole discretion to grant a refund for the affected product and to inspect any product claimed defective before making a final determination of the claim.
4. Sellers liability is limited to the repair or replacement of any product determined by the Seller to be defective in accordance with the terms of this warranty.
5. Disclaimer of loss: This warranty applies only to furniture used for the purpose for which it was designed. The Seller shall not be liable for lost profits, replacement rental costs, other costs of repair or replacement, or any consequential, special, indirect or incidental damages to anyone, anything or any place resulting from any defects in material or workmanship.
6. Improper care and use: Our furniture requires cleaning and maintenance as stipulated above. The Seller will not repair or replace furniture that has been abused, neglected, exposed to extreme humidity (relative humidity over 90%), extreme temperature (below -5°C or above 40° C), had alterations to the product or unauthorized repair. The Seller will also not Weather Cover damage that results from normal wear and tear from use or the general passing of time (for example scratches, burns, watermarks, indentations, pilling, fading or wrinkling of fabric).
7. Differences In colour: Minor variations of colour and grain of timber elements or fabric(s) might occur from piece to piece. These variations do not constitute a defect in material and/or workmanship under this Limited Warranty and minor differences between our furniture and illustrations or images are not Weather Covered by this Limited Warranty.



